

NOTES:

1. PAINTED AQ STANDARD ENAMEL.
2. ROLLERS HAVE NEEDLE BEARINGS WITH LIFETIME SEALS.
3. CENTER PIVOT EQUIPPED WITH LIFETIME LUBRICATED BUSHING.
4. C.G. OF LOAD MUST BE LOCATED WITHIN 10" OF THE CENTER PIN. CONSULT SALES FOR OPTIONS REQUIRED FOR EDGE OR WHEEL LOADING.

MODEL NO: _____

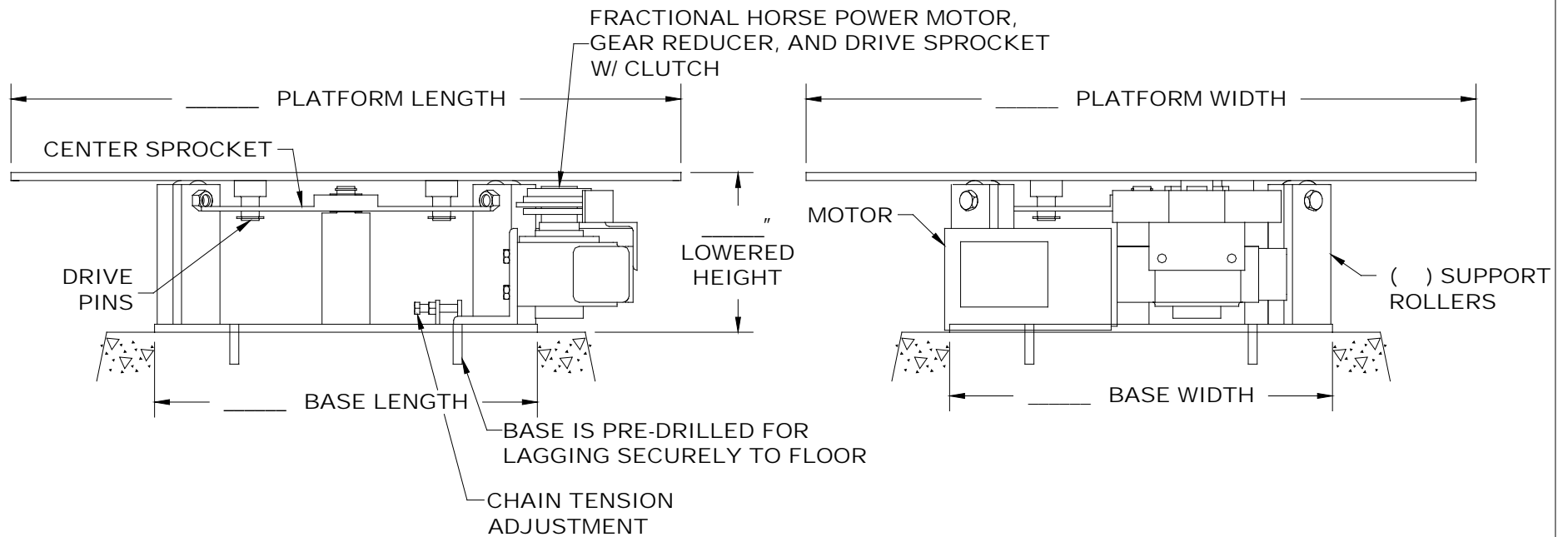
MAX CAPACITY: _____

LOWERED HEIGHT: _____

ROTATION: _____

SPEED: _____

POWER UNIT, CONTROLS, AND ACCESSORIES PER QUOTATION.



POWERED TURNTABLE, SURFACE MOUNTED

SUPPORT ROLLER / CHAIN & SPROCKET STYLE



AUTOQUIP CORP.
 1058 W.INDUSTRIAL AVE.
 GUTHRIE, OK 73044-1058
 888-811-9876 WWW.AUTOQUIP.COM

PROPOSAL DRAWING
 QUOTE NO. _____
 826-0179-0

© COPYRIGHT RESERVED
 AUTOQUIP CORPORATION
 2004