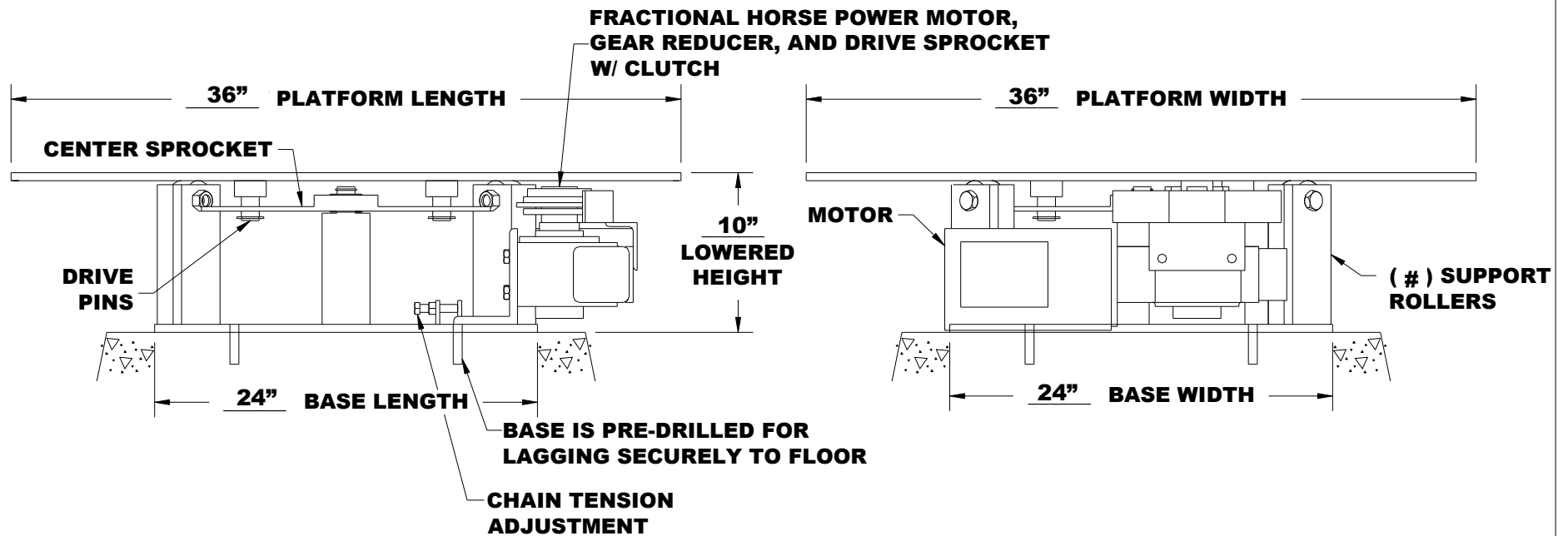


**NOTES:**

1. PAINTED AQ STANDARD ENAMEL.
2. ROLLERS HAVE NEEDLE BEARINGS WITH LIFETIME SEALS.
3. CENTER PIVOT EQUIPPED WITH LIFETIME LUBRICATED BUSHING.
4. C.G. OF LOAD MUST BE LOCATED WITHIN 10" OF THE CENTER PIN. CONSULT SALES FOR OPTIONS REQUIRED FOR EDGE OR WHEEL LOADING.

<b>MODEL NO:</b>	<b>SSRP-3625</b>
<b>MAX CAPACITY:</b>	<b>2,500LBS.</b>
<b>LOWERED HEIGHT:</b>	<b>10"</b>
<b>ROTATION:</b>	<b>360 DEGREES</b>
<b>SPEED:</b>	<b>3.5 RPM</b>

**POWER UNIT, CONTROLS, AND ACCESSORIES PER QUOTATION.**



***POWERED TURNTABLE, SURFACE MOUNTED***

***SUPPORT ROLLER / CHAIN & SPROCKET STYLE***

PROPOSAL DRAWING  
 QUOTE NO. 15577  
 826-0179-0

© COPYRIGHT RESERVED  
 AUTOQUIP CORPORATION  
 2004



**AUTOQUIP CORP.**  
 1058 W.INDUSTRIAL AVE.  
 GUTHRIE, OK 73044-1058  
 888-811-9876 WWW.AUTOQUIP.COM