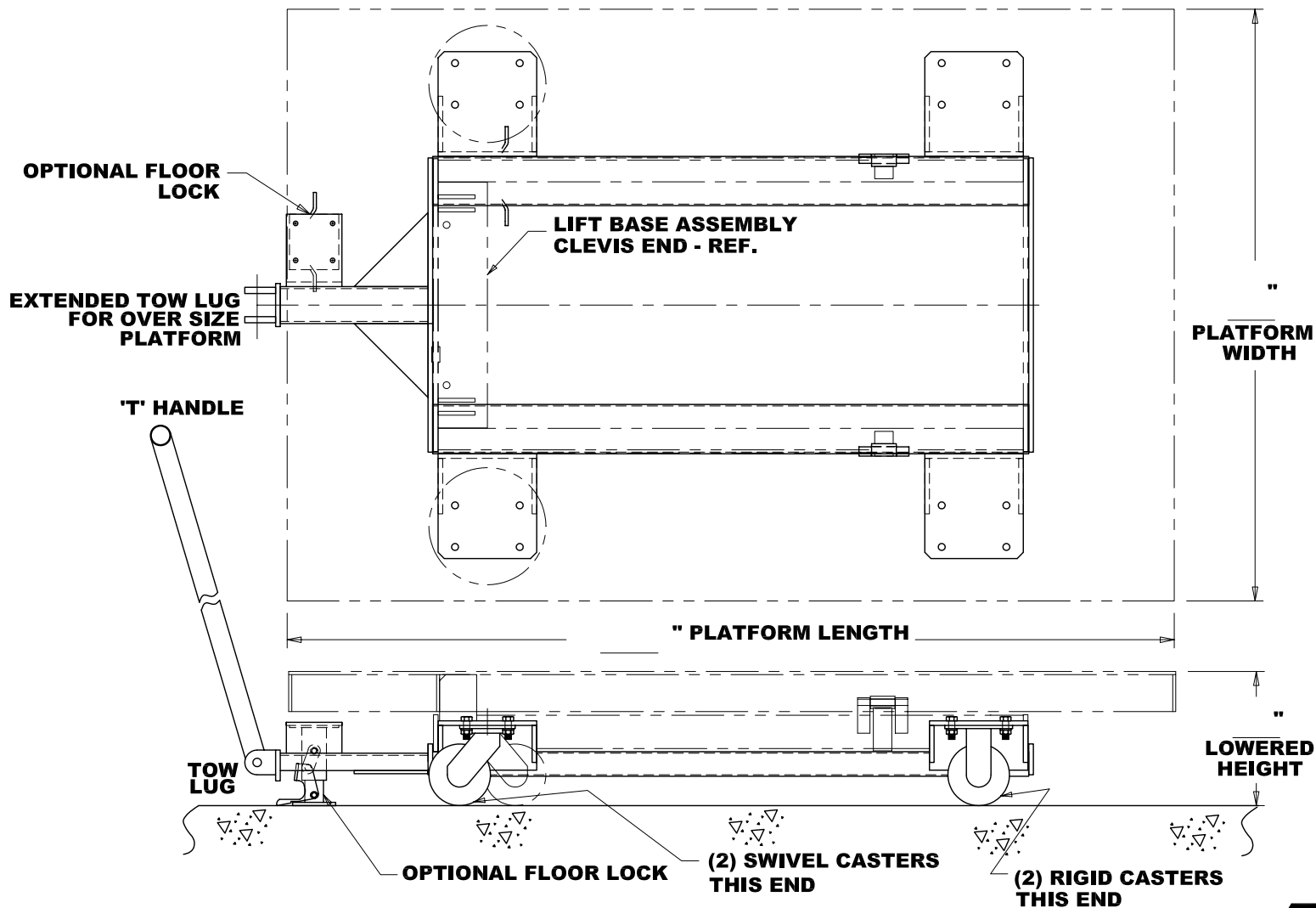


NOTES:

1. ALL AXLES, ROLLERS AND PIVOT POINTS ON THE LIFT ASSEMBLY ARE EQUIPPED WITH LIFE-TIME LUBRICATED BEARINGS. CASTERS ARE EQUIPPED WITH GREASED BEARINGS.
2. LIFT TO BE PAINTED AQ STANDARD ENAMEL.
3. MEETS OR EXCEEDS ANSI MH29.1 STANDARD FOR INDUSTRIAL SCISSORS LIFTS.

THIS PROPOSAL DRAWING IS GENERIC BY DESIGN AND IS FOR REFERENCE ONLY. PLEASE CONTACT AUTOQUIP FOR JOB SPECIFIC APPROVAL DRAWINGS.

MODEL NO: _____
 (SERIES 35 & TITAN)
MAX CAPACITY: _____
LOWERED HEIGHT: _____
 (ADD 4.5" TO LIFT LOWERED HEIGHT)
TRAVEL: _____
RAISED HEIGHT: _____
 (ADD 4.5" TO LIFT RAISED HEIGHT)
POWER UNIT, CONTROLS, AND ACCESSORIES PER QUOTATION.



(NOT TO SCALE)
 PROPOSAL DRAWING
 QUOTE NO. _____
 826-0082-0

TRANSPORT BASE - SIDE MTD CASTERS
(6,000# CAPACITY OR LESS)

REV. 1, 5-24-02

© COPYRIGHT RESERVED
 AUTOQUIP CORPORATION
 2002



AUTOQUIP CORP.
 1058 W.INDUSTRIAL AVE.
 GUTHRIE, OK 73044-1058
 888-811-9876 WWW.AUTOQUIP.COM