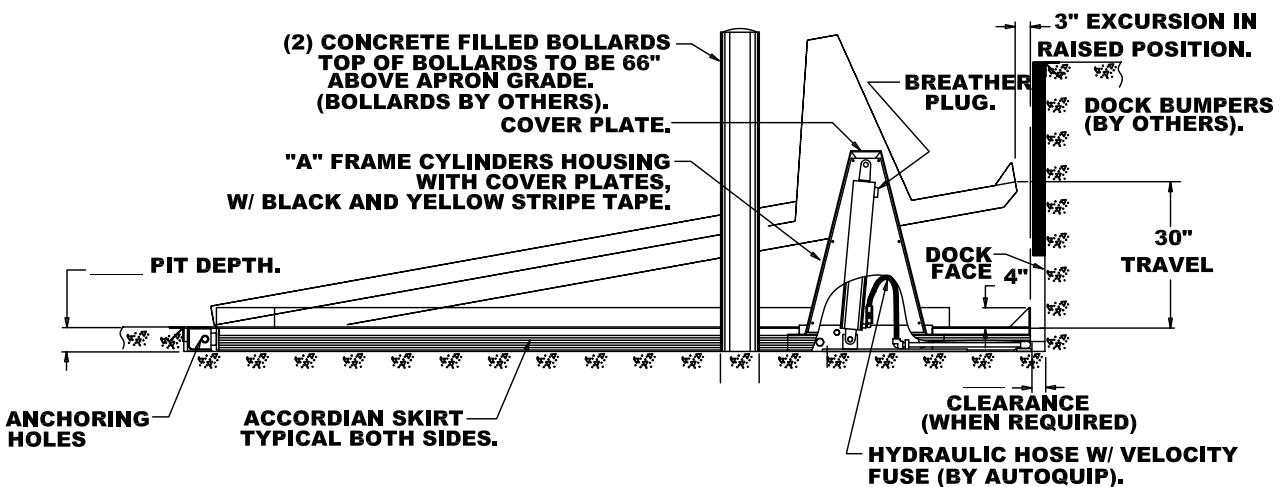
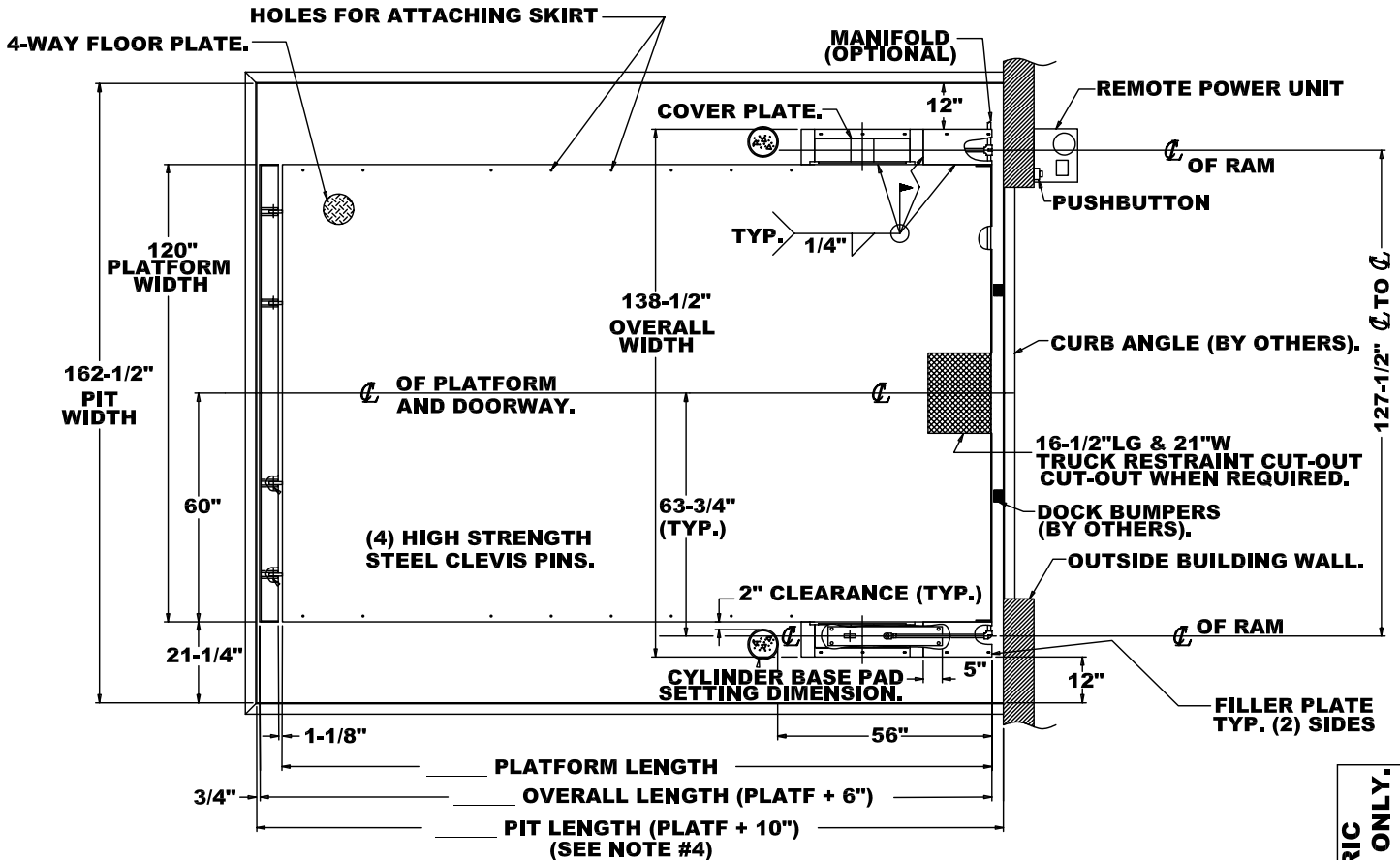


NOTES:

1. LIFT TO BE PAINTED AQ STANDARD ENAMEL.
2. ALL SITE WORK, CONDUIT, PIPING, CURB ANGLES, ECT. BY OTHERS.
3. THIS LIFT MEETS, OR EXCEEDS ALL APPLICABLE INDUSTRY STANDARDS FOR THIS TYPE OF EQUIPMENT.
4. INCLUDES 3-1/4" FOR PLATFORM TO CLEAR DOCK BUMPERS, ADD MORE PIT LENGTH IF ADDITIONAL CLEARANCE IS REQUIRED.

MODEL NO:	_____
MAX CAPACITY:	_____
LOWERED HEIGHT:	_____
TRAVEL:	30"
RAISED HEIGHT:	_____
LENGTH:	_____
POWER UNIT, CONTROLS, AND ACCESSORIES PER QUOTATION.	



THIS PROPOSAL DRAWING IS GENERIC BY DESIGN AND IS FOR REFERENCE ONLY. PLEASE CONTACT AUTOQUIP FOR JOB SPECIFIC APPROVAL DRAWINGS.

SURFACE MOUNTED TRUCK LEVELER MOUNTED IN SHALLOW PIT

(NOT TO SCALE)
 PROPOSAL DRAWING
 QUOTE NO. _____
82600570

REV.3, 11/2/06

© COPYRIGHT RESERVED
 AUTOQUIP CORPORATION
 2006

Autoquip
AUTOQUIP CORP.
 1058 W.INDUSTRIAL AVE.
 GUTHRIE, OK 73044-1058
 888-811-9876 WWW.AUTOQUIP.COM