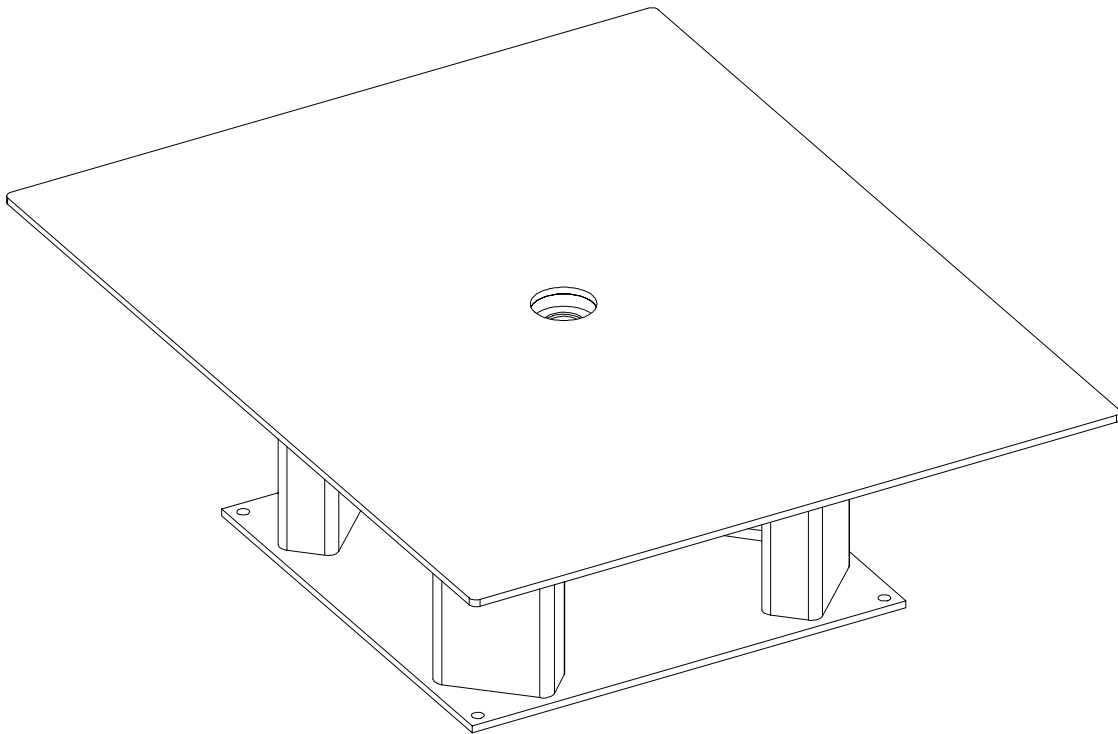


INSTALLATION, OPERATION AND SERVICE MANUAL

SRP POWERED TURNTABLE



P.O. Box 1058 • 1058 West Industrial Avenue • Guthrie, OK 73044-1058 • 405-282-5200 •
FAX: 405-282-8105 • www.autoquip.com

Item # 830SRP

Version 1.0
07/2001

TABLE OF CONTENTS

| | |
|---------------------------------|----|
| Inspection | 3 |
| Dangers, Warnings, and Cautions | 4 |
| Label Identification | 7 |
| Specifications | 10 |
| Installation Instructions | 11 |
| Operating Instructions | 15 |
| Routine Maintenance | 16 |
| General Maintenance | 17 |
| Replacement Parts List | 18 |
| Troubleshooting Analysis | 19 |

IMPORTANT

Please read and understand this manual prior to installation or operation of this turntable. Failure to do so could lead to property damage and/or serious personal injury. If any questions arise, call a local representative or *Autoquip Corporation* at 1-888-811-9876 or 405-282-5200.

PLANNED MAINTENANCE PROGRAM

A local *Autoquip* representative provides a Planned Maintenance Program (PMP) for this equipment using factory-trained personnel. Call a local representative or *Autoquip Corporation* at 1-888-811-9876 or 405-282-5200 for more information.

INSPECTION

Immediately upon receipt of the turntable, a visual inspection should be made to determine that it has not been damaged in transit. Any damage found must be noted on the delivery receipt. In addition to this preliminary inspection, the turntable should be carefully inspected for concealed damage. Any concealed damage found that was not noted on the delivery receipt should be reported in writing to the delivering carrier within 48 hours.

DANGERS, WARNINGS & CAUTIONS

SAFETY ALERTS (Required Reading!)

The following SAFETY ALERTS are intended to create awareness of owners, operators, and maintenance personnel of the potential safety hazards and the steps that must be taken to avoid accidents. These same alerts are inserted throughout this manual to identify specific hazards that may endanger uninformed personnel. Identification of every conceivable hazardous situation is impossible. Therefore, all personnel have the responsibility to diligently exercise safe practices whenever exposed to this equipment.



DANGER!

Identifies a hazardous situation that presents the imminent probability of death or of severe personal injury!!



WARNING!

Identifies a hazardous situation that has the potential of causing death or serious personal injury.



CAUTION!

Identifies a hazardous situation that could lead to the possibility of personal injury of death, and/or may result in equipment damage.

DANGERS, WARNINGS & CAUTIONS

Read and understand this manual and all labels prior to operating or servicing the turntable. All labels are provided in accordance with ANSI Z535.4.



DANGER!

Do not install the turntable in a pit unless it has a beveled-toe guard or other approved toe protection. A shear point can exist which can cause severe injury to the foot.



DANGER!

Extending the platform length or width beyond the factory limit could cause the turntable to tip, which could result in personal injury or death.



DANGER!

To avoid personal injury or death, do not use the unit in or around an area where flammable liquids or vapors may be present.



DANGER!

To avoid personal injury or death, do not use the unit near water. If electrical parts become wet, electrical shock may occur.

DANGERS, WARNINGS & CAUTIONS



DANGER!

To avoid personal injury, stand clear of the unit when the platform is in motion.



DANGER!

HIGH VOLTAGE!! Disconnect and/or lock out the electrical supply to the power unit prior to any maintenance being performed.



WARNING!

NEVER stand, sit or ride on the turntable!



WARNING!

All warning and information decals should be in place as outlined in the “Label Identification” section. If decals are missing or damaged, they should be replaced with new ones. Contact *Autoquip* for replacements.



WARNING!

The turntable base **MUST** be lagged securely to the floor or sufficient structure, or attached to a lift platform (when applicable) before operating the turntable.

DANGERS, WARNINGS & CAUTIONS



WARNING!

Load the platform top as evenly as possible to prevent overloading. Do not load the lift in excess of its rated capacity.



CAUTION!

Familiarize yourself with the operator's manual before operating this equipment.



CAUTION!

Do not continue to depress the "CW" or "CCW" switch if the platform does not turn or if the platform is jammed. To do so may result in permanent damage to the motor or speed reducer.



CAUTION!

Do not operate the turntable if the torque limiter is out of adjustment.

LABEL IDENTIFICATION

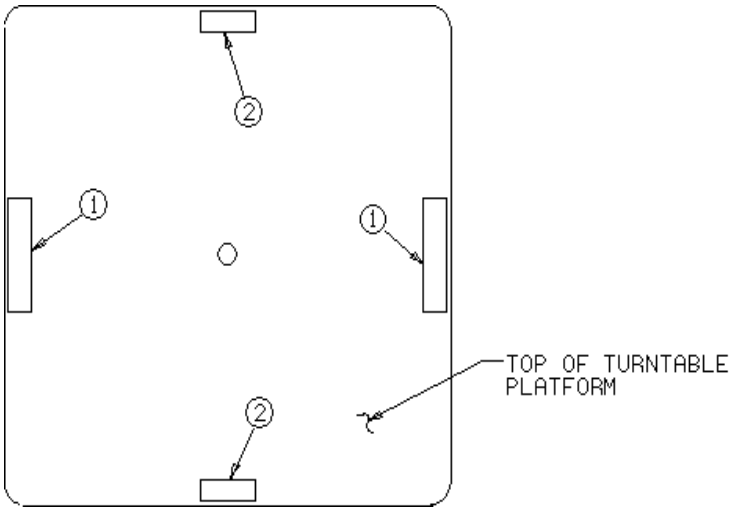


Figure 1 Label Placement Diagram

| SRP Turntable | | | |
|----------------------|------------|--|-----------------|
| Item No. | Qty | Description | Part No. |
| 1 | 2 | Capacity | 36401586 |
| 2 | 2 | No Riders | 36403706 |
| 3 | 1 | Autoquip Serial Number Plate (when required) | 36401511 |

LABEL IDENTIFICATION

Note: Labels shown here are not actual size.



Figure 2 Label 36401586



Figure 3 Label 36403706



Figure 4 Label 36401511 (when required)

SPECIFICATIONS

| Model # | Lifting Capacity | Platform Dimensions | Base Dimensions | Lowered Height | Shipping Weight |
|----------------|-------------------------|----------------------------|------------------------|-----------------------|------------------------|
| SRP-3625 | 2,500 | 36 x 36 | 24 x 24 | 10 | 385 |
| SRP-3640 | 4,000 | 36 x 36 | 24 x 24 | 10 | 385 |
| SRP-3660 | 6,000 | 36 x 36 | 24 x 24 | 10 | 385 |
| SRP-4225 | 2,500 | 42 x 42 | 24 x 24 | 10 | 450 |
| SRP-4240 | 4,000 | 42 x 42 | 24 x 24 | 10 | 450 |
| SRP-4260 | 6,000 | 42 x 42 | 24 x 24 | 10 | 450 |
| SRP-4248-25 | 2,500 | 42 x 48 | 24 x 24 | 10 | 485 |
| SRP-4248-40 | 4,000 | 42 x 48 | 24 x 24 | 10 | 485 |
| SRP-4248-60 | 6,000 | 42 x 48 | 24 x 24 | 10 | 485 |
| SRP-4825 | 2,500 | 48 x 48 | 24 x 24 | 10 | 525 |
| SRP-4840 | 4,000 | 48 x 48 | 24 x 24 | 10 | 525 |
| SRP-4860 | 6,000 | 48 x 48 | 24 x 24 | 10 | 525 |

LOAD CAPACITY

The load capacity rating is labeled on the top of the turntable platform. **Turntables should not be overloaded beyond the established capacity as damage and/or personal injury may result.**

When attaching the turntables to other pieces of equipment such as scissors lifts, remember that the rated capacity of the turntable must not exceed the rated capacity of the lift, tilter, etc.

UNBALANCED LOADING

Most standard turntable capacities assume that the load on the turntable is uniformly distributed. If eccentric or edge loading of the turntable platform is required, the ring bearing design should be chosen over the standard chain and sprocket design.

INSTALLATION INSTRUCTIONS

FLOOR INSTALLATION

1. Make sure installation area is clean before starting.
2. If the permanent electrical work is not complete, some means of temporary lines with an on-off device for the power supply should be set up for testing purposes.
3. Place the turntable in the installation area.



CAUTION!

When moving the turntable, do not attempt to pick it up by the platform; it is attached in the center only and could be damaged. Pick up the turntable from under the base frame ONLY using a strap sling.

4. Make temporary electrical connections. Operate the turntable to ensure that rotation is in the proper direction.
5. If needed, shim to the desired height. DO NOT “spot” shim. Shim the full length of the base frame. This will prevent the plate from bending under an exceptionally heavy load.



DANGER!

HIGH VOLTAGE!! Disconnect and/or lock out the electrical supply to the power unit prior to any maintenance being performed.

INSTALLATION INSTRUCTIONS

6. The base plate of the turntable has pre-drilled holes for lagging it securely to the floor. Mark the holes, drill, and install with anchors. Turntables with oversize platforms have minimum pull out requirements of 2,000 lbs. for each anchor.
7. Make permanent electrical connections and operate the turntable through a few cycles.

PIT INSTALLATION -- MODELS WITH BEVEL TOE GUARDS.



DANGER!

Do not install the turntable in a pit unless it has a bevel toe guard or other approved toe protection. A shear point can exist which can cause severe injury to the foot.

1. Check the pit dimensions. Length and width should be 2" minimum longer and wider than the turntable or lift platform, whichever is greater.
2. Check the chase entrance into the pit. The diameter should be 3". If the permanent electrical work is not complete, some means of temporary lines with an on-off device for the motor should be set up for testing purposes.
3. Lower the turntable into the pit and check for proper height. The turntable should be solid and flush with the pit angle framing. If needed, shim to the desired height. **DO NOT "spot" shim.** Shim the full length of the base frame. This will prevent the plate from bending under an exceptionally heavy load.



CAUTION!

When moving the turntable, do not attempt to pick it up by the platform; it is attached only in the center and could be damaged. Pick up the turntable from under the base frame **ONLY using a strap sling.**

4. Make temporary electrical connections. Operate the turntable to ensure that rotation is in the proper direction.

INSTALLATION INSTRUCTIONS



DANGER!

HIGH VOLTAGE!! Disconnect and/or lock out the electrical supply to the power unit prior to any maintenance being performed.

5. The base frame of the turntable has pre-drilled holes for lagging it securely to the floor. Mark holes, drill, and install with anchors. Turntables with oversize platforms have minimum pull out requirements of 2,000 lbs. for each anchor.
6. Make the permanent electrical connections and operate the turntable through a few cycles.

LIFT /TURN COMBINATIONS – Floor or Pit Installation.

1. Make sure the lift surface is clean and level before starting.
2. Center the turntable base on the lift. Set the turntable platform aside for now.



CAUTION!

When moving the turntable assembly, do not attempt to pick it up by the turntable platform; it is attached and could be damaged. Pick up the turntable from under the base frame at a joint ONLY.

3. The base plate of the turntable has pre-drilled holes for attaching the turntable securely to the lift platform. Mark the holes, drill, and attach with Class 2 (or higher) hardware. The turntable base may be welded to the lift platform, if desired.
4. Install the turntable platform to the turntable base.
5. Position and adjust the platform in the pit making sure there is proper clearance (1" minimum around the edges from the platform to the pit angle).

INSTALLATION INSTRUCTIONS



WARNING!

The turntable base **MUST** be attached securely to the lift platform before operating the turntable.

6. If the combination is installed in a pit, see the “Pit Installation” instructions in this section.

NOTE: Turntables that have platform sizes larger than the lifts to which they are attached must have toe protection, such as beveled-toe guards

7. To ensure that the turntable is positioned exactly over the opening in the floor before it is lowered, a position switch is mounted and wired to the turntable base.
8. Lower the combination into the pit and check for proper combined height.
9. Make the permanent electrical connections and operate the combination through a few cycles, ensuring that the lift will not lower if the turntable platform is not in the proper position (for four-sided platform).

CLEAN UP

1. Clean up any debris from the area. A clean installation makes a good impression and creates a much safer environment!
2. Touch-up paint is available from *Autoquip* for repair of damaged paint surfaces.



WARNING!

All **DANGER**, **WARNING**, and **CAUTION** labels and informational decals and plates must be intact and in place on the turntable. Contact an Autoquip representative if labels are missing or damaged. See “**DANGERS, WARNINGS, and CAUTIONS**” section of this manual.

OPERATING INSTRUCTIONS

Familiarize yourself with this operator's manual before operating this equipment.



WARNING!

NEVER stand, sit or ride on the turntable!

1. Press the "CW" button to cause a clockwise rotation of the turntable. When the "CW" button is pressed, the coil of the motor starter will close the line contact permitting electrical power to be applied to the motor. The rotating motor shaft is mechanically coupled to a gear reducer.

CHAIN AND SPROCKET DESIGN

The gear reducer has an output shaft keyed to a drive sprocket. A drive chain connects the drive sprocket to a large diameter sprocket attached to the underside of the turntable platform. As the motor rotates, the output shaft turns and rotates the platform in the clockwise direction.

RING BEARING DESIGN

The gear reducer output shaft is keyed to a custom-fit gear that meshes with and drives the drive ring of the ring bearing. The drive ring is bolted to and rotates the turntable platform in the clockwise direction.

2. Press the "CCW" button to cause a counter-clockwise rotation of the turntable. Pressing the "CCW" button will cause the reversing motor starter to engage and start the motor. The platform will rotate counter-clockwise.
3. Normally, the platform will continue to rotate as long as the buttons are pushed. For turntables installed in automated systems, the platform can be stopped by pressing the emergency stop (e-stop) or "panic" mushroom button.

ROUTINE MAINTENANCE

Powered turntables normally will require very little maintenance. However, a routine maintenance program could prevent costly replacement of parts and/or downtime.

DYNAMIC INSPECTION (Turntable running)

1. Check any unusual noise when it occurs. Determine the source and correct as necessary.
2. Check for chain tightness and lubricate every 90 days.



DANGER!

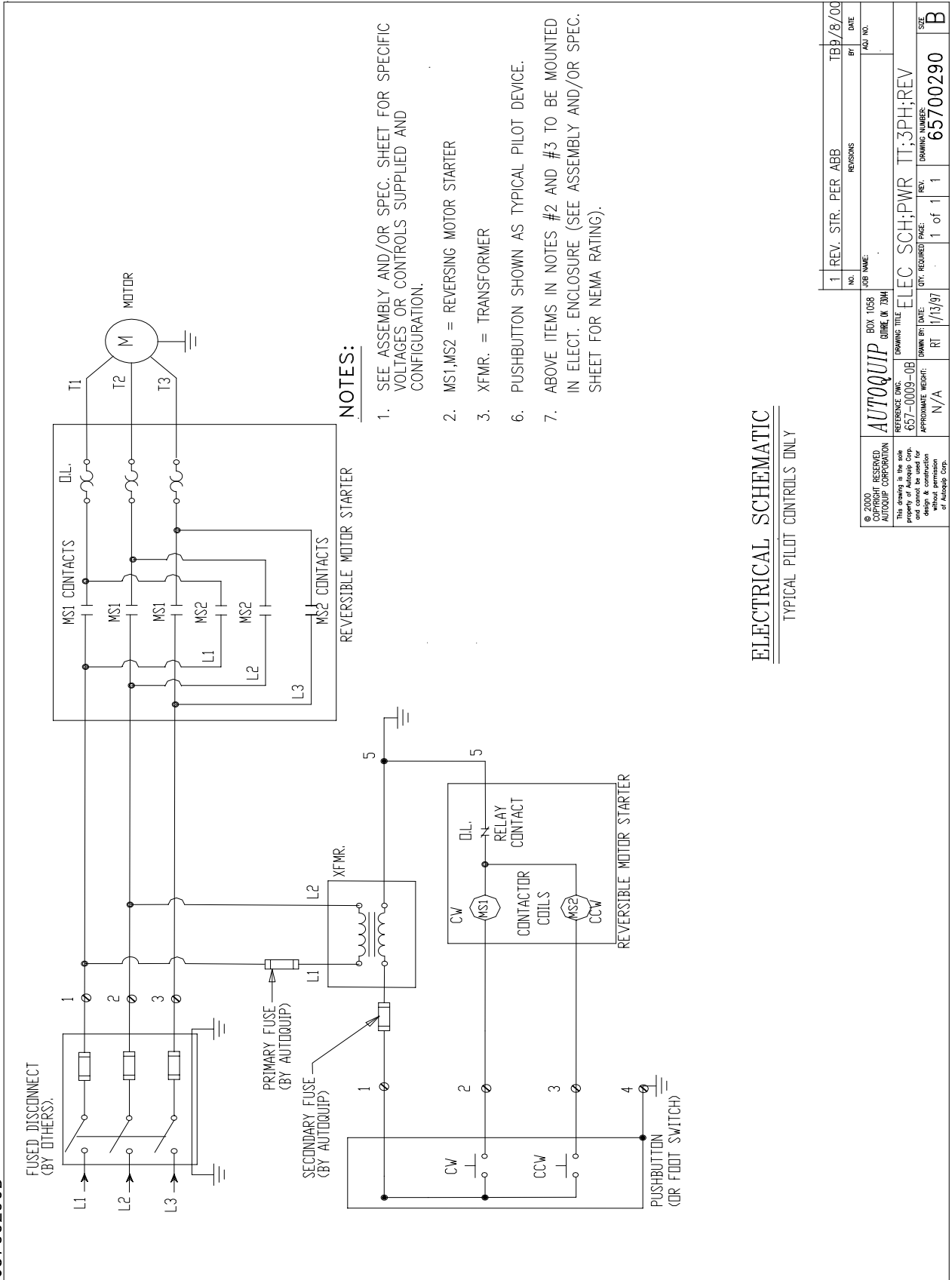
HIGH VOLTAGE!! Disconnect and/or lock out the electrical supply to the power unit prior to any maintenance being performed.

ROUTINE STATIC INSPECTION

1. Check for unusual wear on the rollers. Make sure they are free to rotate and that there is desirable clearance between the rollers and the platform.
2. Check that all retaining pins are in place and secure.
3. Check for broken or cracked welds.
4. Check that all anchors are in place and secure.
5. Check that the chain connections are secure and that all keepers are in place.
6. Check that all enclosures are tight and secure.
7. Check the reducer oil level and add appropriate oil when needed.

GENERAL MAINTENANCE

65700290B



ELECTRICAL SCHEMATIC

TYPICAL PILOT CONTROLS ONLY

| | | |
|---|-------------------|-----------------|
| 1 | REV. STR. PER ABB | TBB/8/00 |
| NO. | REVISIONS | DATE |
| JOB NAME: | | |
| AUTOQUIP BOX 11058 | | |
| REFERENCE: DRAWING TITLE: ELEC. SCH.;PWR TT;3PH;REV | | |
| 657-0009-08 | | |
| DATE: / / | REV.: | DRAWING NUMBER: |
| APPROXIMATE WEIGHT: N/A | 1 of 1 | 65700290 |
| SEE | | B |

Figure 5 Electrical Schematic -- Powered Turntable Only

REPLACEMENT PARTS LIST

Standard “Chain and Sprocket” Design

| PART # | Qty | DESCRIPTION |
|---------------|------------|-----------------------|
| 20046420 | 12 | Roller |
| 20053201 | 1 | Torque limiter |
| 20053820 | 1 | Sprocket plate |
| 20053830 | 1 | Sprocket |
| 28000057 | 70” | Chain #40 |
| 28000198 | 1 | Master link |
| 30100320 | 1 | Motor |
| 31000300 | 1 | Reverse motor starter |
| 33000690 | 1 | Transformer |
| 35350214 | 1 | Primary fuse |
| 35350289 | 1 | Secondary fuse |
| 35370154 | 1 | Secondary fuse holder |
| 37002690 | 1 | Speed reducer |
| 65902470 | 1 | Pushbutton assembly |

Ring Bearing Design

Specific part numbers vary from job to job, depending on the model and options chosen for the application. Call the *Autoquip* Customer Assurance Department with the serial number or customer order number of the specific equipment to order the appropriate parts.

TROUBLESHOOTING ANALYSIS

| PROBLEM | POSSIBLE CAUSE AND SOLUTION |
|--|--|
| Turntable does not rotate | <ul style="list-style-type: none"> • There may be roller damage. Check the turntable base rollers for proper alignment and possible bearing damage. Replace as necessary. • The turntable is loaded beyond its rated capacity and causing the motor to stall or the gearbox to slip. Check the load amount. • One or more pushbuttons or motor connections may not be made, or could be shorted out. Check for and resolve any connection problems. • There may not be sufficient amp draw for the motor. Check the amperage requirements on the motor nameplate and verify with an amp meter that sufficient power draw is available. • The turntable platform may have hit an obstruction. Check for and remove any obstruction that may impede the rotating path of the turntable. |
| Turntable is making loud noises | <ul style="list-style-type: none"> • One or more roller tubes are misaligned with respect to the center pin. Each tube should be perpendicular to the center pin, or the platform will roll across the roller instead of rolling over it. Perpendicularity can be checked using a large square. Call the factory for base replacement. • The gearbox may be cracked or damaged from overloading or improper loading. Call the factory for gearbox replacement parts. |
| Turntable rotates in the wrong direction | <ul style="list-style-type: none"> • The motor or pushbutton connections may have been reversed. Check for and resolve any connection problems. |